

ZerOS Software Release (Public Release)

Released Version:	7.11	Release Date:	6 April 2022
Previous Versions:	7.10	Release Date:	9 November 2021

ZerOS 7.11 Software Release

Introduction

Release 7.11 of ZerOS is a new software release recommended for all consoles and servers listed below, running the ZerOS Operating System. These release notes describe the new features, enhancements and bug fixes that have been implemented between versions 7.10 and 7.11.

Products Affected

- ✓ FLX
- ✓ FLX S24 & S48
- ✓ ZerOS Server
- ✓ ORB Series
- ✓ Solution Series
- ✓ SCD Server & SCD Server Pro
- ✓ Leap Frog 48 & 96
- ✓ Phantom ZerOS (offline software)

Compatibility

No compatibility issues known from 7.10.

Showfiles saved in ZerOS 7.11 might not be backwards compatible to ZerOS 7.10 and earlier. For example, Colour Filter Library references will be lost, resulting in fixtures playing back with incorrect colours.

Update Instructions

Please carefully follow the update instructions available at the end of this document.

The software installation process completely removes all data on the console, including any current show files. If the current show file is still required, **please ensure that backups are taken before proceeding with the update.** After completing the update, you may re-load your show if required.

When performing a software update it is important to ensure that the power supply to your desk is stable and reliable. Power loss during a software update can render your desk unusable.

New Features

ZOS-5815 Updates to “Home” functionality on FLX

Attributes can now be homed by holding HOME and tapping an attribute key. This allows multiple attributes to be homed by holding HOME whilst tapping multiple attribute keys consecutively (holding an attribute key first and then tapping HOME continues to work).

Individual Parameters can now be homed by holding HOME whilst tapping one or more Parameter's centre encoder button.

ZOS-5951 Referencing Colour Filters

When selecting Colour Filters (via Filter Libraries or ‘Mood Boards by LEE Filters’), the selected filter is now referenced rather than RGB values being set. The advantage is that the display above the encoder wheels now shows the referenced filter number and name (along with DMX values). The Output Window, when viewed on an external monitor, will also display the referenced filter number and name of any fixtures that are selected or have parameters in the programmer.

	Intensity	Red	Green	Blue
[1] LED - RGB	0	025 sunset red		

ZOS-9463 Updates to Colour Window, Filter Libraries and ‘Mood Boards by LEE Filters’

LEE, Rosco and Apollo libraries have been updated and a GamColor library has been added. New ‘Mood Boards by LEE Filters’ are included. This data is now stored natively within ‘ZerOS Library’ (ZOS-10872), allowing future updates to be made via ZerOS Library rather than ZerOS itself.

On FLX, the Colour Window has a single row of buttons along the top, which is horizontally scrollable. Clicking ‘Faders’ displays the ‘Active’ view (the ‘Static’ view has been removed) and the Filter Libraries are listed along the top row rather than within a dedicated button.

Boards Filters	LEE	Roscolux	Supergel	e-colour+	Cinagel	GamColor	Apollo		
100 gypsy pink	101 lavender blue	103 blue rose	104 broadway rose	105 antique rose	105X 3/4 antique rose	106 1/2 antique rose	107 1/4 antique rose	108 1/8 antique rose	109 naked pink
110 dark rose	120 bright pink	130 rose	135 soft pink	140 dark magenta	150 pink punch	152 party pink	154 baby pink	155 light pink	160 chorus pink
170 dark flesh pink	180 cherry	190 cold pink	195 nymph pink	220 pink magenta	235 pink red	245 light red	250 medium red xt	270 red orange	280 fire red
290 fire orange	305 french rose	310 english rose	315 autumn glory	320 peach	323 indian summer	324 dark bastard amber	325 bastard amber	327 pale sepia	328 tan tone
Red 235 pink red (255)		Green 235 pink red (100)			Blue 235 pink red (109)				

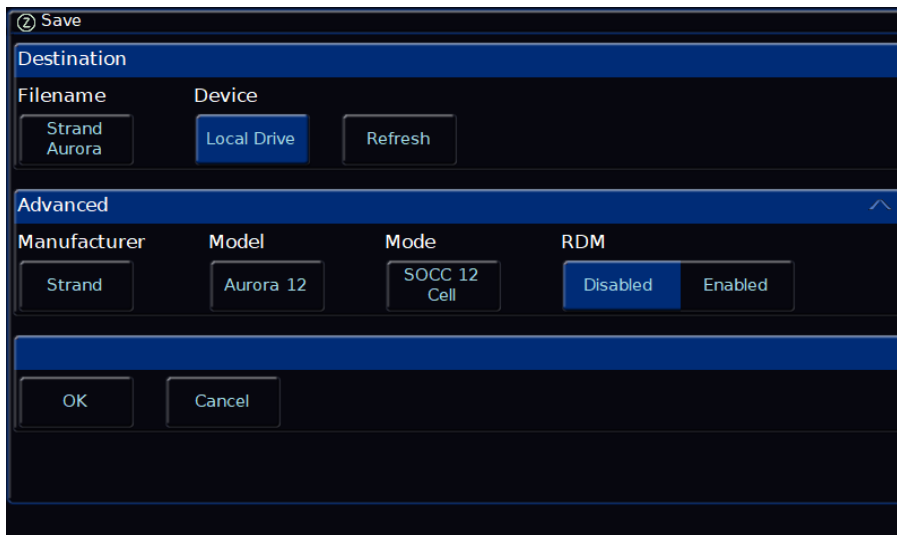
ZOS-10873 Fixture Filtering

An “Add Filter” feature has been added to the first screen of “Add Fixtures”. This new feature allows fixtures with equivalent DMX maps to be found within the extensive ZerOS Library. First, the number of DMX Channels are defined. Second, the search can be narrowed further by assigning specific parameters to specific channels. Pressing “OK” returns to the “Add Fixtures” screen, but only displays the results of the filter. This feature can be used in combination with ZOS-10875 to find an equivalent fixture and then save it as an alternative Manufacturer / Model / Mode.



ZOS-10875 Export fixture

An “Export” option has been added to the second screen of “Add Fixtures”. This new feature allows any fixture (including fixtures created over RDM or from an ASCII showfile) to be saved as a .zfix file to an external USB drive, which can then be loaded into another ZerOS console. The “Advanced” tab allows the Manufacturer, Model and Mode to be changed before exporting the fixture (along with the associated RDM information). This feature can be used in combination with ZOS-10873 to find an equivalent fixture and then save it as an alternative Manufacturer / Model / Mode.



ZOS-10909 Support for multiple colour emitters

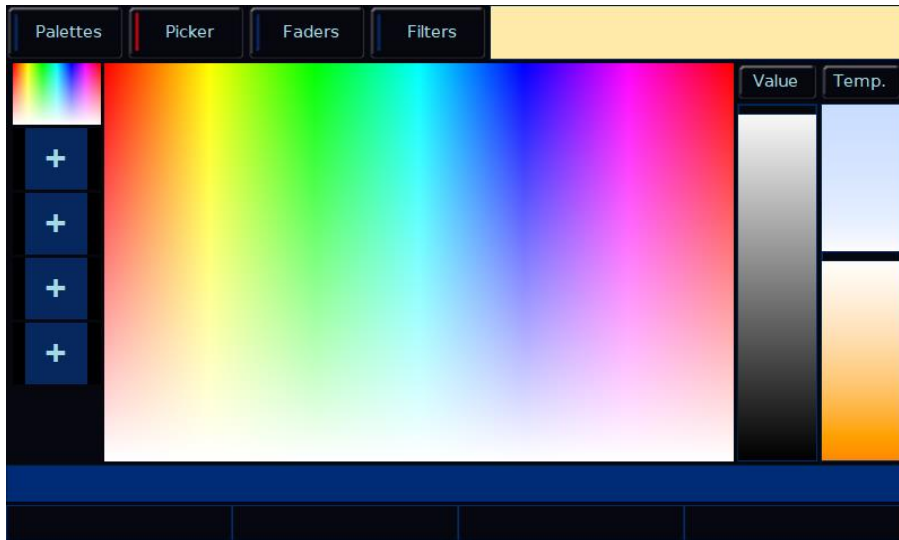
ZerOS' colour mixing algorithm now supports over 20 colour emitters. These additional colours are supported by Auto Colour Palettes, Colour Picker, Image Picker, Colour Faders, Colour Filters, Mood Boards by LEE Filters, Effect Waveforms and Change Profile / Fixture swap-out.

Supported parameters include Deep Red, Red, Red Orange, Orange, Amber, Yellow, Light Green, Lime, Green, Mint Green, Green Cyan, Cyan, Royal Blue, Blue, Indigo, Deep Blue, Congo Blue, Purple, Magenta, Violet, UV and Pink.

'Auto Effect Palettes' continue to be based around RGB / CMY colour mixing but will adjust all other colour emitters to 0% when selected.

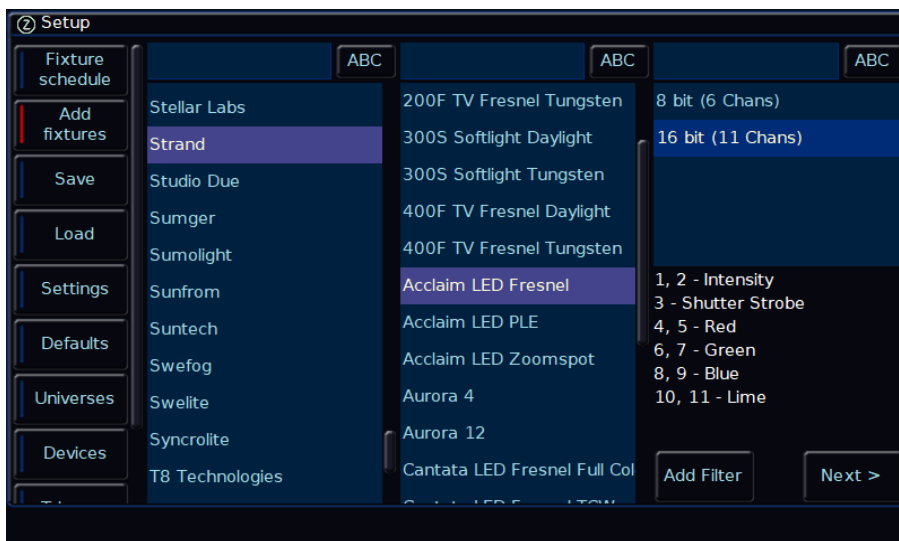
ZOS-10911 Colour Temperature

A "Colour Temp." fader has been added to the Colour Picker and Colour Faders. This allows a colour to be picked and then be "warmed up" or "cooled down". Tapping the "Temp." button resets the fader to default. The default value of the "Temp." button can be changed by adjusting the fader and typing RECORD TEMP. Similarly, UPDATE TEMP and DELETE TEMP (to remove the custom value and revert to the default value) are supported.



ZOS-10912 Parameter List

The first screen of "Add Fixtures" now includes a parameter list for the selected fixture in the selected mode. This can be useful when selecting a fixture mode or in combination with ZOS-10873 to find a fixture with an equivalent DMX map as an alternative fixture.



ZOS-10932 Generic Multicell fixtures added

In Add fixtures > Generic, there are now “RGB Multicell”, “RGBA Multicell”, “RGBAW Multicell” and “RGBW Multicell” fixture personalities available. Each of these include “8 Bit” or “16 Bit” options and the ability to define how many cells the fixture includes (“RGB 8 Bit” ranges from 2 Cells through to 170 Cells). The fixtures behave as “linear” (baton) fixtures.

ZOS-10933 ZerOS Library v3.1

ZerOS Library now stores Filter Libraries (LEE, Rosco, GAM and Apollo) and Mood Boards by LEE Filters (ZOS-9463) along with the data behind new ZerOS features such as Fixture Filtering (ZOS-10873) and the new Colour Mixing Algorithm (ZOS-10909). Future updates to this data will be via ZerOS Library, rather than ZerOS itself. Other updates include the latest Art-Net OEM codes and over 29,000 fixture personalities.

ZOS-10934 Colour indications updated within Fixture Schedule and Add Fixtures

All fixtures that are not from the currently installed version of ZerOS Library are now displayed in red within the ‘Fixture Schedule’ and ‘Add Fixtures’. These can include custom personalities, personalities built over RDM, personalities imported via ASCII and showfile personalities which have been superseded in newer versions of ZerOS Library. These fixtures may not fully support the latest ZerOS features.

To take advantage of the latest features, personalities highlighted red can be replaced with the latest version within ZerOS Library using the Fixture Schedule. After updating a fixture, it is strongly recommended to ensure they play back as expected by checking any cues the fixture was programmed in.

(The saturation of red has also been reduced to appear less alarming).



Enhancements and Bug Fixes

ZOS-8413	'Hue', 'Saturation' and 'Value' parameters now included within Colour Mixing algorithm
ZOS-9525	The "Advanced" panel of SETUP > SAVE is now collapsed by default
ZOS-10859	Two additional Auto Colour Palettes have been added – "Warm White" and "Cool White"
ZOS-10865	Improved performance of the Fixture Schedule when selecting large quantity of fixtures
ZOS-10870	Fixed issue on ORB Series and Solution Series causing a crash when viewing the Fixture Levels window
ZOS-10876	Fixed stability issue when discovering RDM devices that wrongly report differing "Subdevice Count" on root and sub devices
ZOS-10882	Fixtures with UV now have a setting within Fixture Schedule to select if UV is included within colour mixing
ZOS-10883	Colour mixing parameters now have updated default values to support ZOS-10909 (Support for multiple colour emitters)
ZOS-10884	Colour parameters from Custom Fixture Files (.ift) are now "name matched" to work with ZerOS' new Colour Mixing
ZOS-10886	Fixed issue with Auto-Select on Fader Movement in Fixture Schedule
ZOS-10887	Fixed issue where encoders were not working with multicell fixtures where cells were reversed
ZOS-10888	Fixed issue where some cells of multicell fixtures would occasionally not record into cues correctly
ZOS-10892	Fixed issue where fixture information was not correctly included within CSV exports
ZOS-10899	Fixed stability issue on ORB XF
ZOS-10902	Fixed issue related to Multi-Part Custom Fixture Files (.ift)
ZOS-10903	Fixed issue on ORB Series causing a crash when viewing the Cue Details window
ZOS-10904	Fixed stability issue when deleting an RDM fixture whilst "Identify" was active
ZOS-10910	Various updates to Colour Faders tab, including adding "Default" buttons above each fader and removing the "Static" view
ZOS-10916	'V. Cool White', 'Cool White', 'White', 'Med. White' and 'Warm White' parameters now included within Colour Mixing algorithm
ZOS-10918	Improvements to parameter labeling and numbering
ZOS-10919	Loosened rules related to loading non-compliant ASCII showfiles by downgrading some errors to warnings
ZOS-10926	Improvements to how fixtures with colour mixing in both Master and Cells are controlled
ZOS-10930	Fixed stability issue when changing external Desktop whilst click-and-holding a mouse button over the Fixture Details grid
ZOS-10936	Improvements made when changing a fixture to one that uses a different colour mixing method

Known issues

No known issues

Software Update Instructions

Introduction

Please familiarise yourself with these update instructions before proceeding. Instructions must be followed accurately and in order. Deviations or omissions could render the desk unusable and require it to be returned to the factory for recovery.

If any difficulties are encountered at any point, or you are in doubt on any of the instructions below, then do not proceed any further with the update and contact Zero 88 for assistance.

The software installation process completely removes all data on the console, including any current show files. If the current show file is still required, **please ensure that backups are taken before proceeding with the update**. After completing the update, you may re-load your show if required.

When performing a software update it is important to ensure that the power supply to your desk is stable and reliable. Power loss during a software update can render your desk unusable.

Consoles running ZerOS 7.8.3 or later.

To perform the update:

- Download the software from the Zero 88 website (zero88.com/zeros)
- Unzip the download and save the .exe file onto a USB stick (don't put it inside any folders)
- Plug the USB stick into your console
- Press SETUP to enter the console's setup screen and choose "Load" on the monitor
- Select the file from the list displayed on screen and follow the onscreen instructions
- Once the update is complete, remove the USB Memory Stick and reboot the desk

Once all the software is up to date, you can get on with enjoying the new features in the desk software. Zero 88 recommend printing these Release Notes and having them with you when operating the desk, as some functionality may have changed which is explained in these notes.

Consoles running ZerOS 7.8.2.39 or older.

To update a console running ZerOS 7.8.2.39 or older, please visit zero88.com/manuals/zeros/software-updates/zeros-usb-creator for instructions.