

ZerOS consoles can be remotely controlled using free remote applications, compatible with iOS, Android and Windows 10.

There are two applications available:

- "ZerOS Remote" enables wireless control of your rig, allowing you to manipulate, control and playback your shows. This is available for iOS and Android devices including iPads and tablets, but is mainly designed for use on smart phones.
- "ZerOS Monitor" emulates a wireless additional external touchscreen monitor. This is available for iOS, Android and Windows 10.

If you're on an iOS device...

- [Click here to go to the App store to download the Remote app](#)
- [Click here to go to the App store to download the Monitor app](#)

If you're on an Android device...

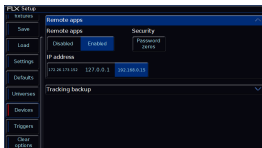
- [Click here now to go to the Google Play store to download the Remote app](#)
- [Click here now to go to the Google Play store to download the Monitor app](#)

If you're on a Windows device...

[Click here to download ZerOS Monitor for Windows.](#)

When running the ZerOS Monitor app on Windows 10, keyboard shortcuts are available to remotely control the console.

[Click here to find out more about keyboard shortcuts.](#)



To enable access to the console from these apps, change "Remote" to "Enabled".

Security

Your network should already include security measures to ensure unauthorised access isn't possible, however the password on the console adds an additional layer of security (this security is simply a password the remote will prompt you for before connecting - ensure you change the password from the default one). To disable this level of security,

leave the Password option blank – this will disable the password.

IP Address

The IP address options will allow you to configure your Remote network settings. You can choose between using a DHCP address, or a static IP address.

[For information on network settings, see the Networking chapter.](#)

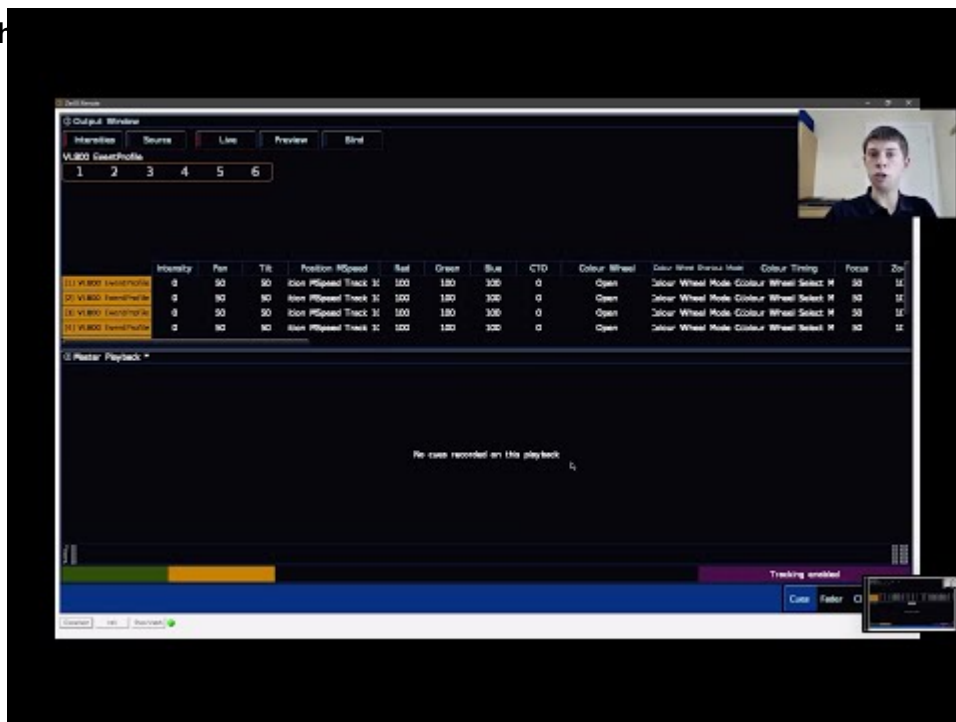
Once you have configured your console's remote settings, connect your remote device to the same network as your console. You can then start the app on the remote device, and your console should be found. Press on the name of your console, and click the connect button.

[Click here to find out how to build a Remote Network.](#)

On ZerOS Server, when the Remote is enabled, the IP address and subnet are displayed on the front display when the "Remote" LED is illuminated. The IP address will be displayed first, and then the display will cycle to show the subnet.

If you see 0.0.0.0 shown on the front display when the "Remote" LED is illuminated, this means ZerOS Server's Remote IP has been set to DHCP, however there is no DHCP Server on the network.

Take a look at th



<https://youtu.be/B9xcZqCSdRU>